

DEPARTMENT OF THE ARMY TECHNICAL MANUAL

ORGANIZATIONAL, DIRECT SUPPORT, AND GENERAL SUPPORT
MAINTENANCE
REPAIR PARTS AND SPECIAL TOOLS LIST
(INCLUDING DEPOT MAINTENANCE REPAIR PARTS AND SPECIAL TOOLS)
FOR
POWER SUPPLY PP-3940A/G
(NSN 6130-00-460-2148)

Headquarters, Department of the Army, Washington, D.C.
8 April 1977

Current as of 27 December 1976

REPORTING OF ERRORS

You can improve this manual by recommending improvements using DA Form 2028-2 (Test) located in the back of the manual. Simply tear out the self-addressed form, fill it out as shown on the sample, fold it where shown, and drop it in the mail.

If there are no blank DA Forms 2028-2 (Test) in the back of your manual, use the standard DA Form 2028 (Recommended Changes to Publications and Blank Forms) and forward to the Commander, US Army Electronics Command, ATTN: DRSEL-MA-Q, Fort Monmouth, New Jersey 07703.

In either case a reply will be furnished direct to you.

Table of Contents

	Page	Illus Figure
Section I. Introduction.	1	
II. Repair parts list	5	
Group 00 Power Supply PP-3940A/G.	5	1
01 Component board (A1).	9	2
02 Component board (A2).	10	3
03 Component board (A3).	13	4
04 Component board (A4).	17	5
Section III. Special tools list (Not applicable)		
IV. National stock number and part number index.	18	

☆ This manual supersedes TM 11-6124-247-24P-1, 30 March 1973.

SECTION I

INTRODUCTION

1. Scope

This manual list spares and repair parts; special tools; special test, measurement, and diagnostic equipment (TMDE), and other special support equipment required for performance of organizational, direct support, and general support maintenance of the PP-3940A/G. It authorizes the requisitioning and issue of spares and repair parts as indicated by the source and maintenance codes.

2. General

This Repair Parts and Special Tools List is divided into the following sections:

a. Section II. Repair Parts List. A list of spares and repair parts authorized for use in the performance of maintenance. The list also includes parts which must be removed for replacement of the authorized parts. Parts Lists are composed of functional groups in numeric sequence, with the parts in each group listed in figure and item number sequence.

b. Section III. Special Tools Lists. Not applicable.

c. Section IV. National Stock Number and Part Number Index. A list, in National item identification number (NIIN) sequence, of all National stock numbers (NSN) appearing in the listings, followed by a list, in alphameric sequence, of all part numbers appearing in the listings. National stock numbers and part numbers are cross-referenced to each illustration figure and item number appearance.

3. Explanation of Columns

a. Illustration. This column is divided as follows:

(1) *Figure number.* Indicates the figure number of the illustration on which the item is shown.

(2) *Item number.* The number used to identify item called out in the illustration.

b. Source, Maintenance, and Recoverability (SMR) Codes.

(1) *Source code.* Source codes indicate the manner of acquiring support items for maintenance, repair, or overhaul of end items. Source codes are entered in the first and second positions of the Uniform SMR Code format as follows:

<i>Code</i>	<i>Definition</i>
PA	Item procured and stocked for anticipated or known usage.
XD	A support item that is not stocked. When required, item will be procured through normal

<i>Code</i>	<i>Definition</i>
	supply channels.

NOTE

Cannibalization or salvage may be used as a source of supply for any items source coded above except those coded XA and aircraft support items as restricted by AR 700-42.

(2) *Maintenance code.* Maintenance codes are assigned to indicate the levels of maintenance authorized to USE and REPAIR support items. The maintenance codes are entered in the third and fourth positions of the Uniform SMR Code format as follows:

(a) The maintenance code entered in the third position will indicate the lowest maintenance level authorized to remove, replace, and use the support item. The maintenance code entered in the third position will indicate one of the following levels of maintenance:

Application/Explanation

O – Support item is removed, replaced, used at the organizational level.

F – Support item is removed, replaced, used at the direct support level.

H – Support item is removed, replaced, used at the general support level.

(b) The maintenance code entered in the fourth position indicates whether the item is to be repaired and identifies the lowest maintenance level with the capability to perform complete repair (i.e., all authorized maintenance functions). This position will contain one of the following maintenance codes:

Code Application/Explanation

H – The lowest maintenance level capable of complete repair of the support item is the general support level.

Z – Nonreparable. No repair is authorized.

(3) *Recoverability code.* Recoverability codes are assigned to support items to indicate the disposition action on unserviceable items. The recoverability code is entered in the fifth position of the Uniform SMR Code format as follows:

Recoverability codes

Definition

Z – Nonreparable item. When unserviceable, condemn **and dispose at** the level indicated in position 3.

H – Repairable item. When uneconomically repairable, condemn and dispose at the general support level.

c. National Stock Number. Indicates the National

stock number assigned to the item and will be used for requisitioning purposes.

d. Part Number. Indicates the primary number used by the manufacturer (individual, company, firm, corporation, or Government activity), which controls the design and characteristics of the item by means of its engineering drawings, specification, standards, and inspection requirements to identify an item or range of items.

NOTE

When a stock numbered item is requisitioned, the repair part received may have a different part number than the part being replaced.

e. Federal Supply Code for Manufacturer (FSCM). The FSCM is a 5-digit numeric code listed in SB 708-42 which is used to identify the manufacturer, distributor, or Government agency, etc.

f. Description. Indicates the Federal item name and, if required, a minimum description to identify the item.

g. Unit of Measure (U/M). Indicates the standard of the basic quantity of the listed item as used in performing the actual maintenance function. This measure is expressed by a two-character alphabetical abbreviation (e. g., ea, in, pr, etc). When the unit of measure differs from the unit of issue, the lowest unit of issue that will satisfy the required units of measure will be requisitioned.

h. Quantity Incorporated in Unit. Indicates the quantity of the item used in the breakout shown on the illustration figure, which is prepared for a functional group, subfunctional group, or an assembly.

4. Special Information

The following publication pertains to the PP-3940A/G and its components: TM 11-6130-247-14-1, Power supply PP-3940A/G

5. How to Locate Repair Parts

a. When National stock number or part number is unknown.

(1) *First.* Using the table of contents, determine the functional group within which the item belongs. This is necessary since illustrations are prepared for functional groups and listings are divided into the same groups.

(2) *Second.* Find the illustration covering the functional group to which the item belongs.

(3) *Third.* Identify the item on the illustration and note the illustration figure and item number of the item.

(4) *Fourth.* Using the Repair Parts Listing, find the figure and item number noted on the illustration.

b. When National stock number or part number is known.

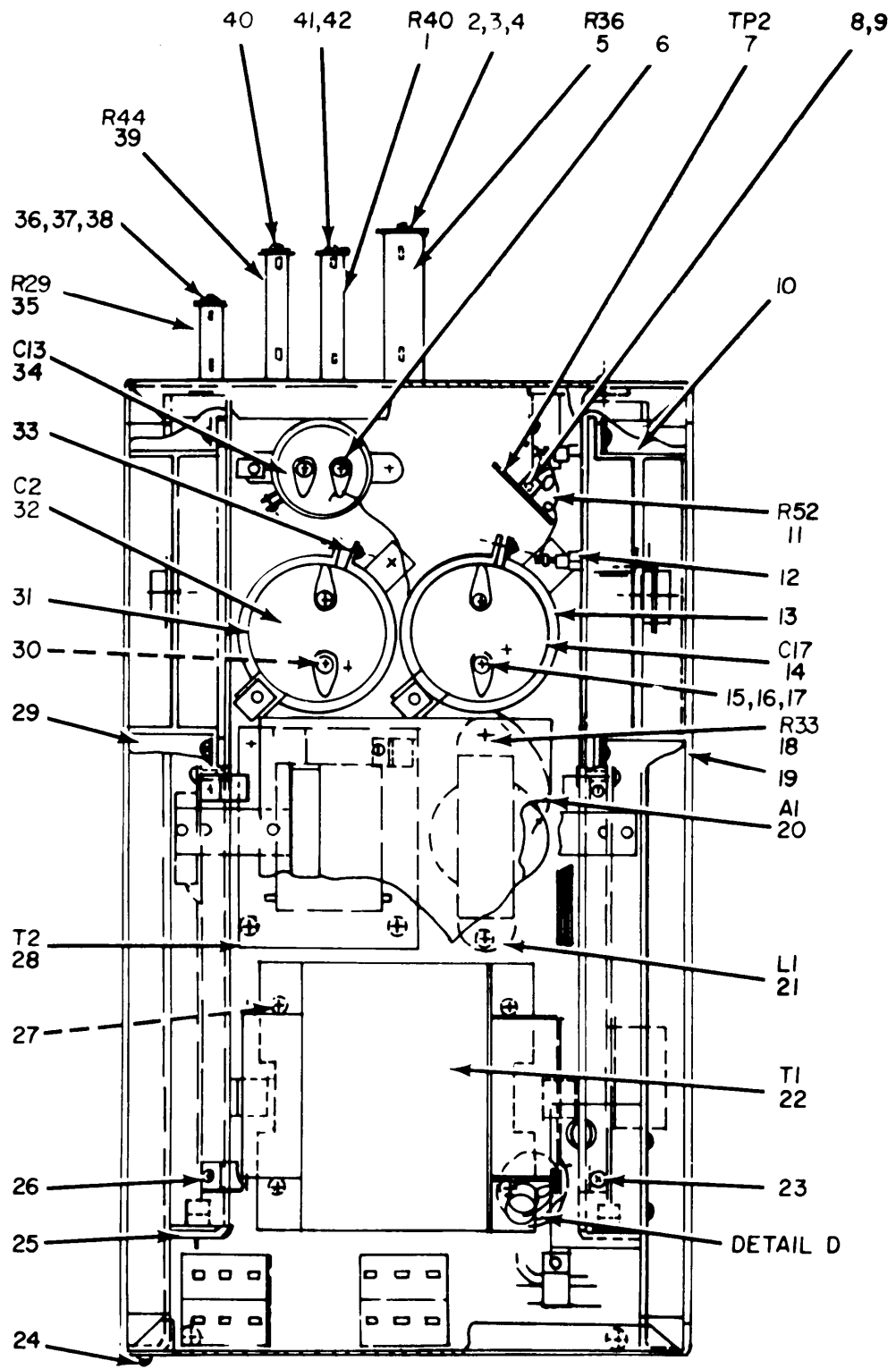
(1) *First.* Using the Index of National Stock Numbers and Part Numbers, find the pertinent National stock number or part number. This index is in NIIN sequence followed by a list of part numbers in alphameric sequence, cross-referenced to the illustration figure number and item number,

(2) *Second.* After finding the figure and item number, locate the figure and item number in the repair parts list.

6. Abbreviations

Not applicable.

(Next printed page is 4)



TOP VIEW

EL2JV001

Figure 1. Power Supply PP-3940A/G (Sheet 1 of 3).

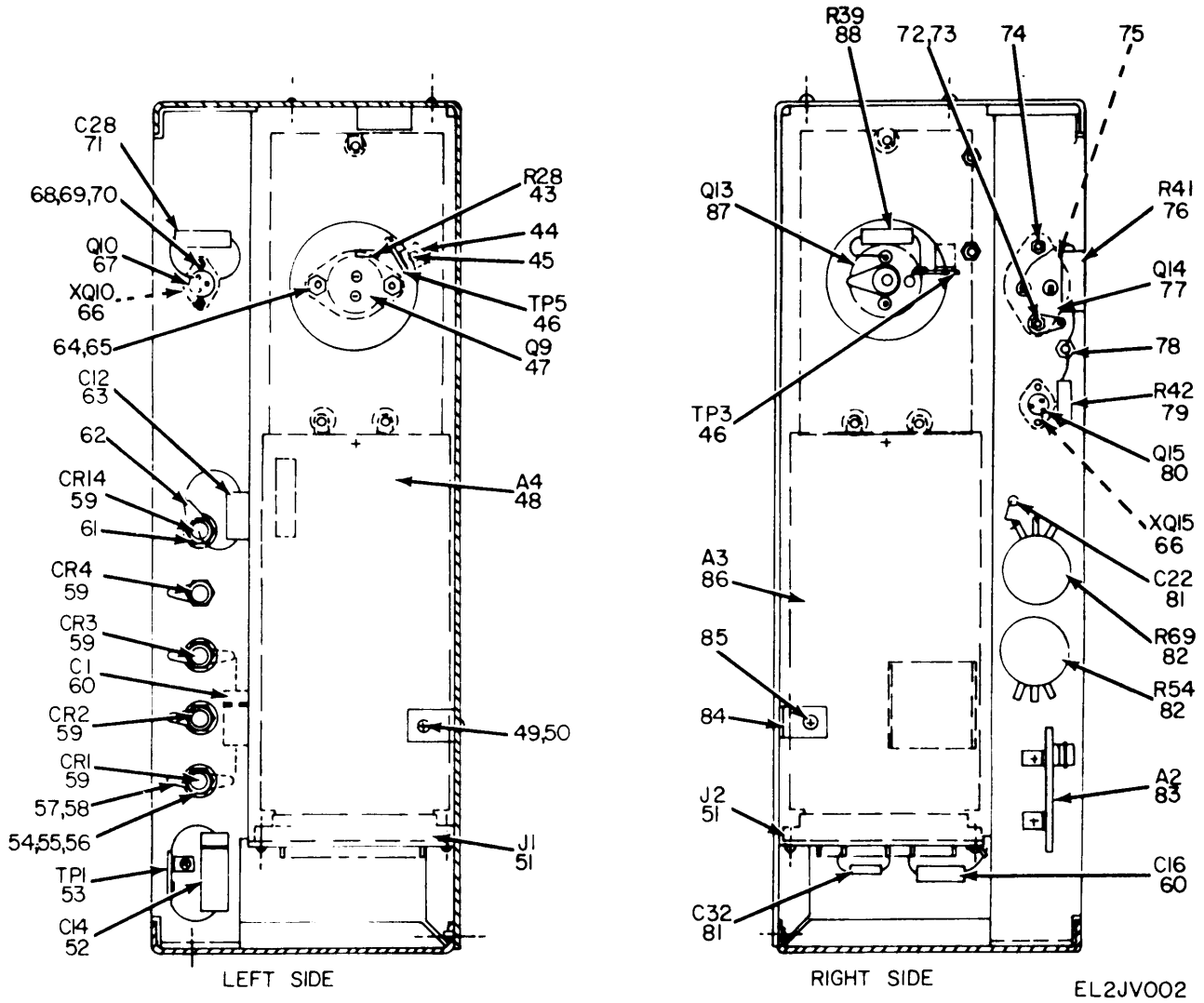
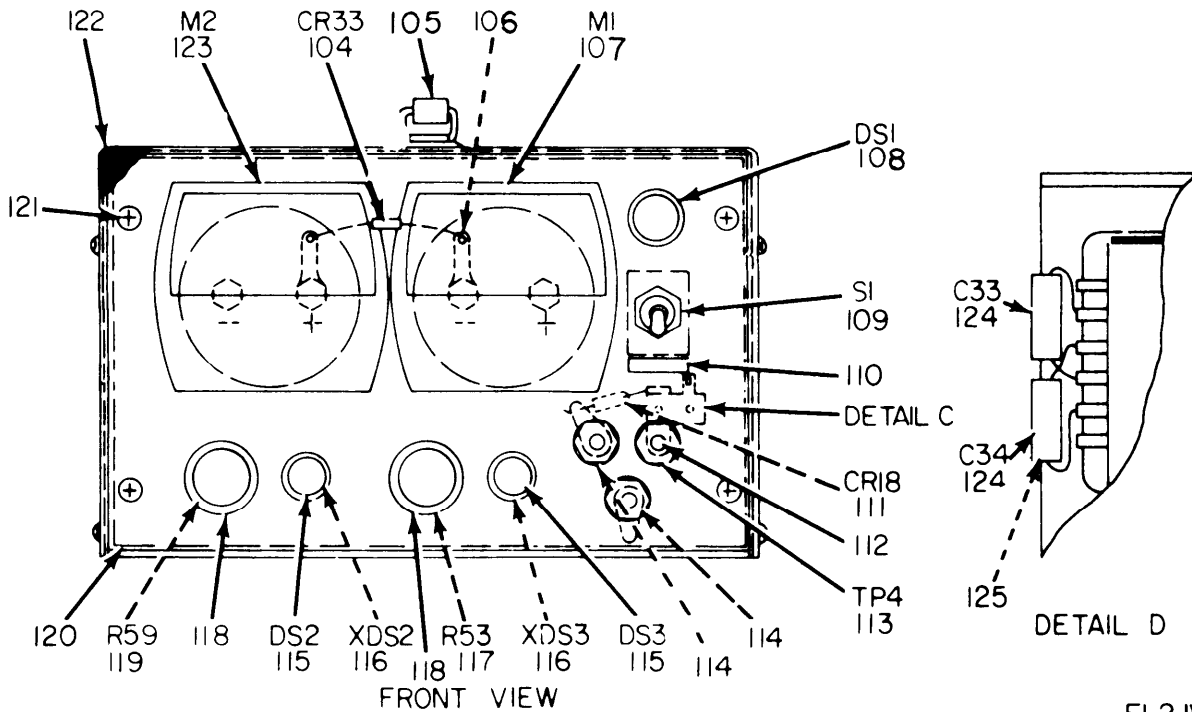
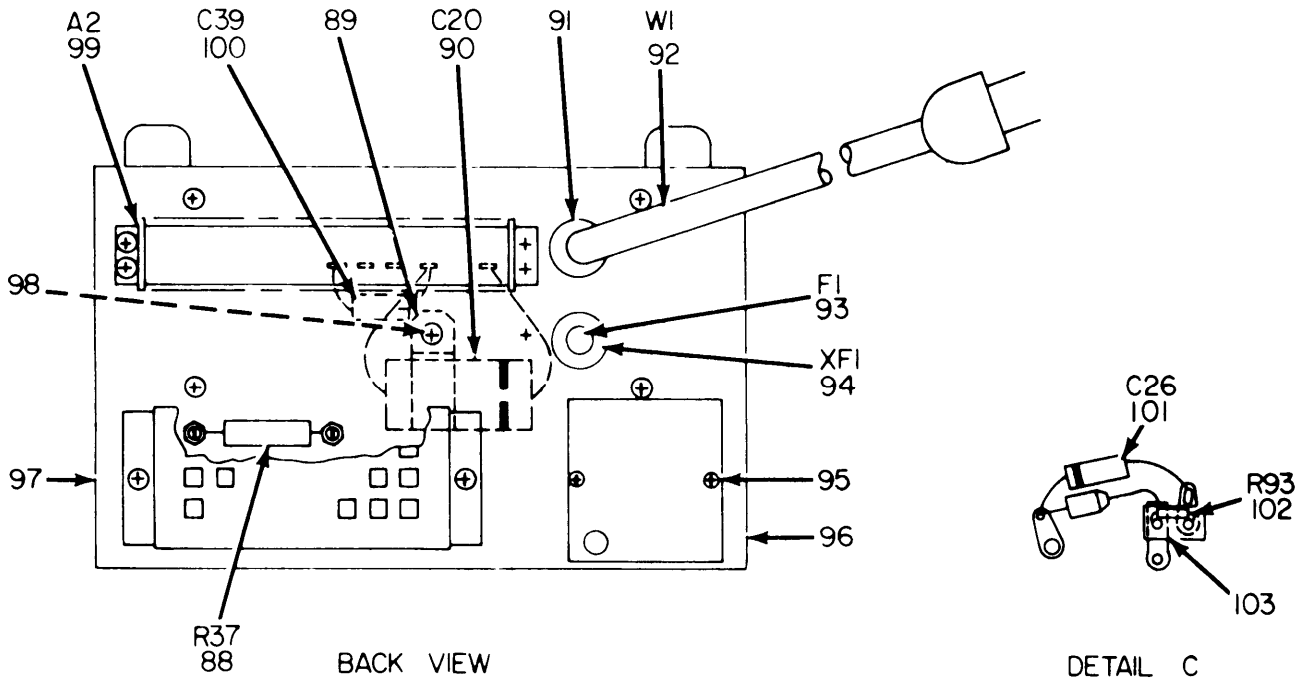


Figure 1. Power Supply PP-3940A/G (Sheet 2 of 3).



EL2JV003

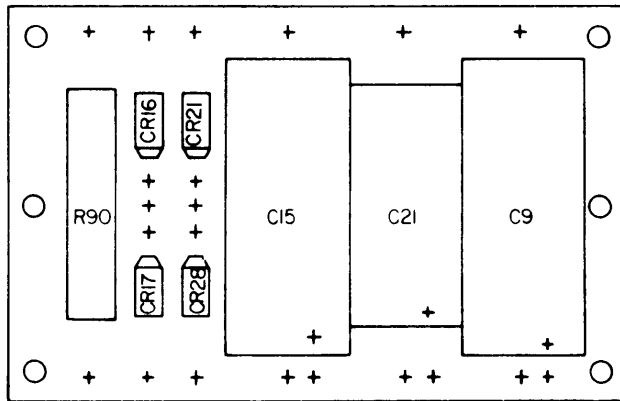
Figure 1. Power Supply PP-3940A/G (Sheet 3 of 3).

SECTION II (1) ILLUSTRATION (A) (B) FIG ITEM NO NO		(2) SMR CODE	(3) NATIONAL STOCK NUMBER	(4) PART NUMBER	(5) FSCM	TM11-6130-247-24P-1 (6) DESCRIPTION	(7) USABLE ON CODE U/M	(8) QTY INC IN UNIT
						GROUP 00 POWER SUPPLY PP-3940A/G		
1	1	PAHZZ	5905-00-812-9625	10F15	63743	RESISTOR, FIXED, WIRE WOUND	EA	1
1	2	XDHZZ		6-1056	55938	SCREW, MACHINE	EA	1
1	3	XDHZZ		903	63743	WASHER	EA	2
1	4	PAHZZ	5970-00-808-4111	924	63743	WASHER, INSULATOR	EA	2
1	5	XDHZZ		25F125	63743	RESISTOR, FIXED, WIRE WOUND	EA	1
1	6	PAHZZ	5940-00-847-3138	2104-04-00	78139	TERMINAL, LUG	EA	8
1	7	XDHZZ		10348	71785	TERMINAL STRIP	EA	1
1	8	PAHZZ	5310-00-687-7337	510-061810-01	78189	NUT, ASSEMBLED WASHER	EA	3
1	9	XDHZZ		6-2004-21	55938	SCREW, MACHINE	EA	11
1	10	XDHZZ		73-1062	55938	CHASSIS, ELECTRICAL EQUIPMENT	EA	1
1	11	PAHZZ	5905-00-163-3856	190-3502	55938	RESISTOR, FIXED	EA	1
1	12	PAHZZ	5940-00-204-8023	766	81312	TERMINAL, STUD	EA	5
1	13	PAHZZ	5910-00-682-2543	VR3	90201	RETAINER, CAPACITOR	EA	1
1	14	PAHZZ	5910-00-161-4396	FAH502-50	09023	CAPACITOR, FIXED, ELECTROLYTIC	EA	1
1	15	XDHZZ		6-4014	55938	WASHER, LOCK	EA	4
1	16	XDHZZ		6-2001-82	55938	SCREW, MACHINE	EA	9
1	17	PAHZZ	5310-00-081-4219	MS27183-12	96906	WASHER	EA	1
1	18	PAHZZ	5905-00-163-3855	190-3501	55938	RESISTOR, FIXED	EA	1
1	19	XDHZZ		NC400B	55938	HEAT SINK	EA	1
1	20	XDFHH		190-3578-1	55938	COMPONENT BOARD ASSEMBLY A-1	EA	1
1	21	PAHZZ	5950-00-086-9730	127-1720	55938	CHOKE	EA	1
1	22	PAHZZ	5950-00-161-4418	126-2778	55938	TRANSFORMER	EA	1
1	23	XDHZZ		6-2005-17	55938	SCREW, MACHINE	EA	6
1	24	XDHZZ	5340-00-166-8585	8H209	76348	BUMPER, RUBBER	EA	4
1	25	XDHZZ		73-1212	55938	BRACKET, ANGLE	EA	12
1	26	XDHZZ		6-2004-19	55938	SCREW, MACHINE	EA	2
1	27	PAHZZ	5310-00-933-8119	MS35338-137	96906	WASHER, LOCK	EA	4
1	28	XDHZZ		126-2854	55938	TRANSFORMER	EA	1
1	29	PAHZZ	5999-00-975-9657	91-1800	55938	HEAT SINK	EA	1
1	30	XDHZZ		C6310-632-27	78553	NUT	EA	2
1	31	PAHZZ	5910-00-828-0725	115058-05	00853	RETAINER, CAPACITOR	EA	1
1	32	PAHZZ	5910-00-925-3786	FAH252-75	09023	CAPACITOR, FIXED, ELECTROLYTIC	EA	1
1	33	XDHZZ		6-2001-15	55938	SCREW, MACHINE	EA	3
1	34	PAHZZ	5910-00-162-1836	FAH252-50	09023	CAPACITOR, FIXED, ELECTROLYTIC	EA	1
1	35	XDHZZ		5F40	63743	RESISTOR, FIXED, WIRE WOUND	EA	1
1	36	XDHZZ		2-137	55938	NUT, SELF-LOCKING, HEXAGON	EA	3
1	37	XDHZZ		6-2001-19	55938	SCREW, MACHINE	EA	1
1	38	PAHZZ	5310-00-782-1349	MS15795-804	96906	WASHER, FLAT	EA	4
1	39	XDHZZ		10F1000	63743	RESISTOR, FIXED, WIRE WOUND	EA	1

SECTION II (1) ILLUSTRATION (A) FIG NO		(2) (B) ITEM NO	(3) SMR CODE	(4) NATIONAL STOCK NUMBER	(5) PART NUMBER	(6) FSCM	TM11-6130-247-24P-1 DESCRIPTION	(7) USABLE ON CODE	(8) QTY INC IN UNIT
1	40	XDHZZ	5305-00-235-9600	6-2004-14	55938	SCREW,MACHINE	EA	4	
1	41	PAHZZ	5970-00-284-8009	929	63743	WASHER,NONMETALLIC	EA	6	
1	42	XDHZZ		6-1105	55938	SCREW,MACHINE	EA	2	
1	43	XDHZZ		7XR15	63743	RESISTOR, FIXED, WIRE WOUND	EA	1	
1	44	XDHZZ	5940-00-156-7344	2104-06-00	78189	TERMINAL, LUG	EA	1	
1	45	PAHZZ	5310-00-836-3520	511-041800-00	78189	NUT, ASSEMBLED WASHER	EA	4	
1	46	XDHZZ	5940-00-171-0156	1513	71785	TERMINAL, STRIP	EA	2	
1	47	PAHZZ	5961-00-162-8670	18-137-1	55938	TRANSISTOR	EA	1	
1	48	PAFHH	6130-00-169-6048	190-3581-1	55938	COMPONENT BOARD ASSEMBLY A-4	EA	1	
1	49	XDHZZ		6-2001-13	55938	SCREW, MACHINE	EA	1	
1	50	PAHZZ	5310-00-880-5976	MS15795-806	96906	WASHER, FLAT	EA	5	
1	51	XDHZZ		HB15-50	81312	CONNECTOR, RECEPTACLE, ELECTRICAL	EA	2	
1	52	PAHZZ	5910-00-937-2043	V146XR32	00656	CAPACITOR, FIXED, PLASTIC	EA	1	
1	53	XDHZZ	5940-00-193-0056	1510A	71785	TERMINAL STRIP	EA	1	
1	54	PAHZZ	5310-00-934-9765	MS35650-304	96906	NUT, PLAIN, HEXAGON	EA	6	
1	55	PAHZZ	5310-00-264-1390	AN961-10	88044	WASHER, FLAT	EA	6	
1	56	PAHZZ	5305-00-194-8006	6-2001-69	55938	SCREW, MACHINE	EA	6	
1	57	PAHZZ	5940-00-050-7021	2118-10-01	78189	TERMINAL, LUG	EA	5	
1	58	PAHZZ	5310-00-809-9789	HP35W1P5	03877	WASHER	EA	12	
1	59	PAHZZ	5961-00-924-4265	368C	05277	SEMICONDUCTOR DEVICE, DIODE	EA	5	
1	60	PAHZZ	5910-00-937-2046	V146XR28	00656	CAPACITOR, FIXED, PLASTIC	EA	2	
1	61	XDHZZ	5310-00-933-8120	MS35338-138	96906	WASHER, LOCK	EA	3	
1	62	XDHZZ	5940-00-681-8184	520	96906	TERMINAL, LUG	EA	3	
1	63	XDHZZ		V146XR27	00656	CAPACITOR, FIXED, PLASTIC	EA	1	
1	64	PAHZZ	5310-00-934-9761	MS35649-264	96906	NUT, PLAIN, HEXAGON	EA	2	
1	65	XDHZZ		6-2001-14	55938	SCREW, MACHINE	EA	6	
1	66	XDHZZ	5935-00-755-3771	05-3301	91662	SOCKET, TRANSISTOR	EA	2	
1	67	PAHZZ	5961-00-163-3854	18-149-4	55938	TRANSISTOR	EA	1	
1	68	XDHZZ		6-2001-56	55938	SCREW, MACHINE	EA	4	
1	69	PAHZZ	5310-00-938-2013	MS35649-224	96906	NUT, PLAIN, HEXAGON	EA	4	
1	70	PAHZZ	5310-00-928-2690	MS35338-134	96906	WASHER, LOCK	EA	4	
1	71	PAHZZ	5910-00-919-5907	V146XR22	00656	CAPACITOR, FIXED, PLASTIC	EA	1	
1	72	XDHZZ	5310-00-933-8118	MS35338-135	96906	WASHER, LOCK	EA	3	
1	73	XDHZZ	5970-00-952-8286	D150	91500	WASHER	EA	1	
1	74	PAHZZ	5310-00-934-9748	MS35649-244	96906	NUT, PLAIN, HEXAGON	EA	2	
1	75	XDHZZ	5970-00-818-3486	210-6300	13327	BUSHING	EA	2	
1	76	PAHZZ	5905-00-279-1979	RC42GF101J	81349	RESISTOR, FIXED, COMPOSITION	EA	1	
1	77	PAHZZ	5961-00-833-6321	2N669	13327	TRANSISTOR	EA	1	
1	78	XDHZZ		6-2004-11	55938	SCREW, MACHINE	EA	4	
1	79	PAHZZ	5905-00-110-0991	RCR32G151JS	81349	RESISTOR, FIXED, COMPOSITION	EA	1	

SECTION II (1) ILLUSTRATION		(2)	(3)	(4)	(5)	TM11-6130-247-24P-1 (6)	(7)	(8)
(A) FIG NO	(B) ITEM NO	SMR CODE	NATIONAL STOCK NUMBER	PART NUMBER	FSCM	DESCRIPTION	USABLE ON CODE	U/M INC IN UNIT
1	80	XDHZZ	5961-00-225-2199	RT9338	07933	TRANSISTOR	EA	1
1	81	XDHZZ		V146XR16	00656	CAPACITOR, FIXED, PLASTIC	EA	2
1	82	PAHZZ	5905-00-929-7170	29-407	55938	RESISTOR, VARIABLE	EA	2
1	83	XDPHH		190-3582	55938	COMPONENT BOARD ASSEMBLY A-2	EA	1
1	84	PAHZZ	5340-00-291-5294	CPC742-5	71616	CLAMP, LOOP	EA	4
1	85	XDHZZ	5305-00-235-9650	6-2004-20	55938	SCREW, MACHINE	EA	4
1	86	PAFHH	6130-00-171-0910	190-3583-1	55938	COMPONENT BOARD ASSEMBLY A-3	EA	1
1	87	PAHZZ	5961-00-933-9441	18-024	55938	TRANSISTOR	EA	1
1	88	PAHZZ	5905-00-162-8671	7XR24	63743	RESISTOR, FIXED, WIRE WOUND	EA	2
1	89	PAHZZ	5340-00-205-6136	CPC742-10	71616	CLAMP, LOOP	EA	1
1	90	PAHZZ	5910-00-976-1129	V146XR34	00656	CAPACITOR, FIXED, PLASTIC	EA	1
1	91	PAHZZ	5975-00-246-4906	SR6P4	28520	BUSHING, STRAIN RELIEF	EA	1
1	92	PAHZZ	6150-00-089-8814	18-3SJPLUG3P	73617	CABLE ASSEMBLY, POWER, ELECTRICAL	EA	1
1	93	PAOZZ	5920-00-284-6787	312005	75915	FUSE, CARTRIDGE	EA	1
1	94	PAHZZ	5920-00-043-2641	342012	75915	FUSEHOLDER	EA	1
1	95	PAHZZ	5305-00-969-6495	MS24693C25	96906	SCREW, MACHINE	EA	2
1	96	XDHZZ		73-1536	55938	WALL, RIGHT HAND	EA	1
1	97	XDHZZ		73-1537	55938	WALL, LEFT HAND	EA	1
1	98	PAHZZ	5310-00-680-6464	510-081810-01	78189	NUT, ASSEMBLED WASHER	EA	1
1	99	PAHZZ	5940-00-983-6073	12-140Y	71785	TERMINAL BOARD	EA	1
1	100	XDHZZ		TE1304-2	56289	CAPACITOR, FIXED, ELECTROLYTIC	EA	1
1	101	XDHZZ		V146XR25	00656	CAPACITOR, FIXED, PLASTIC	EA	1
1	102	XDHZZ		RCR20G010JS	81349	RESISTOR, FIXED, COMPOSITION	EA	1
1	103	XDHZZ		73-1063	55938	COVER, RESISTOR	EA	1
1	104	XDHZZ		1N746	04713	SEMICONDUCTOR DEVICE, DIODE	EA	1
1	105	XDHZZ		919-412-170	12136	HANDLE	EA	2
1	106	PAHZZ	5940-00-155-7685	2101-10-00	78189	TERMINAL, LUG	EA	2
1	107	PAHZZ		94-433-3	55938	AMMETER	EA	1
1	108	PAOZZ	6210-00-111-6971	1050A1	08806	LAMP, INCANDESCENT	EA	1
1	109	PAHZZ	5930-00-655-1582	7565K6	27191	SWITCH, TOGGLE	EA	1
1	110	XDHZZ		90-3501	55938	PLATE, IDENTIFICATION	EA	1
1	111	XDHZZ	5961-00-133-5482	CER68	21845	SEMICONDUCTOR DEVICE, DIODE	EA	1
1	112	PAHZZ	5940-00-356-2493	DF30RC	78636	BINDING POST, RED	EA	1
1	113	XDHZZ		90-3421	55938	TERMINAL STRIP	EA	1
1	114	PAHZZ	5940-00-269-2219	DF30BC	78636	BINDING POST, BLACK	EA	2
1	115	PAOZZ	6240-00-683-0560	345	08806	LAMP, INCANDESCENT	EA	2
1	116	PAHZZ	6210-00-023-7029	162-8430-972	81349	INDICATOR, LIGHT, GREEN	EA	2
1	117	PAHZZ	5905-00-163-3858	29-469	55938	RESISTOR, VARIABLE	EA	1
1	118	PAOZZ		DS70-1-3890-1CB4	49056	KNOB	EA	2
1	119	PAHZZ	5905-00-163-3857	29-404	55938	RESISTOR, VARIABLE	EA	1

SECTION II		TM11-6130-247-24P-1							
(1)	(2)	(3)	(4)	(5)	(6)		(7)	(8)	
ILLUSTRATION									
(A)	(B)	NATIONAL			DESCRIPTION			QTY	
FIG	ITEM	STOCK	PART	FSCM		USABLE ON CODE	U/M	INC	
NO	NO	NUMBER	NUMBER					IN	
								UNIT	
1	120	XDHZZ		73-1538	55938	PANEL, FRONT	EA	1	
1	121	XDHZZ	5305-00-235-9569	6-2000-43	55938	SCREW, MACHINE	EA	4	
1	122	XDHZZ		73-1061	55938	COVER, POWER SUPPLY	EA	1	
1	123	XDHZZ	6625-00-043-2184	94-549-4	55938	VOLTMETER	EA	1	
1	124	PAHZZ	5910-00-025-0748	V146XR48	00656	CAPACITOR, FIXED, PLASTIC	EA	2	
1	125	XDHZZ		DELTAT103	05820	BUSHING, INSULATOR	EA	6	

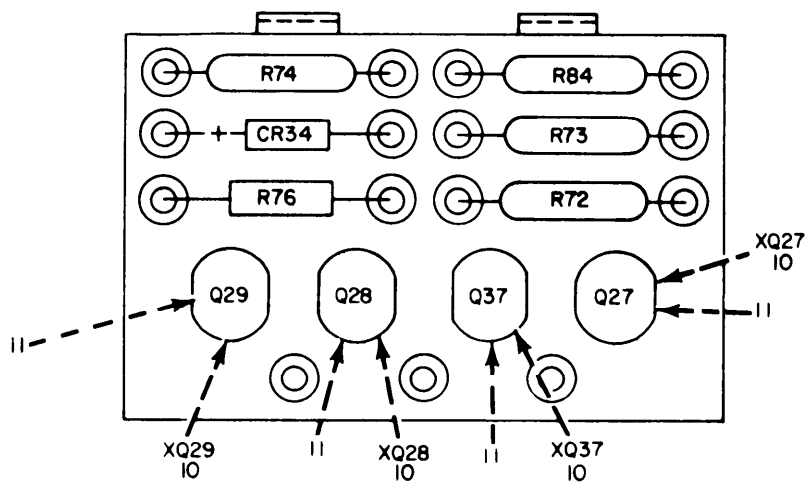


REF. DES.	ITEM NO.	REF. DES.	ITEM NO.
C9	1	CR17	4
C15	2	CR21	4
C21	3	CR28	4
CR16	4	R90	5

EL2JV004

Figure 2. Component Board A-1.

(1) ILLUSTRATION		(2)	(3)	(4)	(5)	(6) DESCRIPTION	(7)	(8)
FIG NO	ITEM NO	SMR CODE	NATIONAL STOCK NUMBER	PART NUMBER	FSCM	UNABLE ON CODE	U/M	QTY INC IN UNIT
GROUP 01 COMPONENT BOARD A-1								
2	1	PAHZZ	5910-00-161-4420	39D198G006FL4	56289	CAPACITOR, FIXED, ELECTROLYTIC	EA	1
2	2	XDHZC		34D188G015FP4	56289	CAPACITOR, FIXED, ELECTROLYTIC	EA	1
2	3	PAHZZ	5910-00-280-7416	TVA1208	56289	CAPACITOR, FIXED, ELECTROLYTIC	EA	1
2	4	PAHZZ	5961-00-133-5482	CER68	21845	SEMICONDUCTOR DEVICE, DIODE	EA	4
2	5	XDHZC		121-2X681J	63743	RESISTOR, FIXED, WIRE WOUND	EA	1

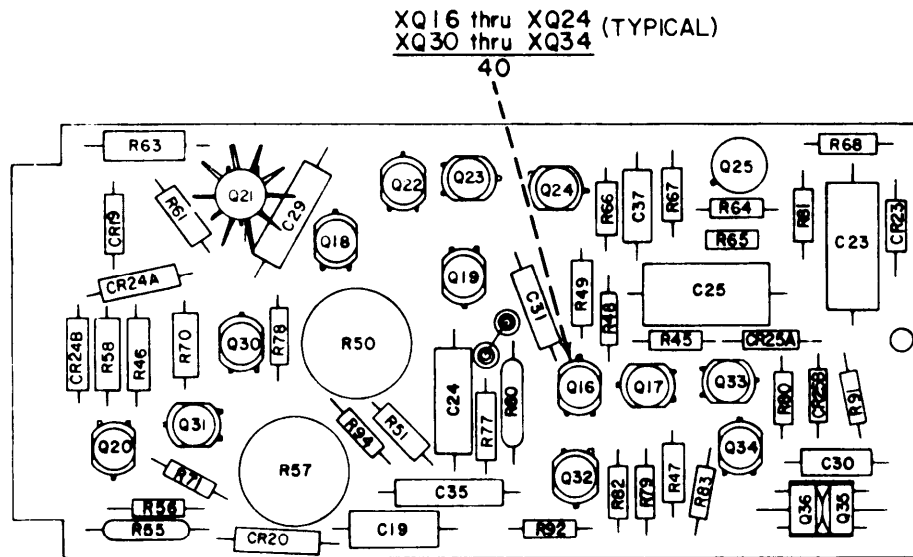


REF. DES.	ITEM NO.	REF. DES.	ITEM NO.
CR34	1	R72	5
Q27	2	R73	6
Q28	2	R74	7
Q29	3	R76	8
Q37	4	R84	9

EL2JV005

Figure 3. Component Board A-2.

(1) ILLUSTRATION		(2)	(3)	(4)	(5)	(6) DESCRIPTION	(7)	(8)
(a) FIG NO	(b) ITEM NO	SMR CODE	NATIONAL STOCK NUMBER	PART NUMBER	FSCM		QTY INC IN	U/M UNIT
							UNABLE ON CODE	
GROUP 02 COMPONENT BOARD A-2								
3	1	PAHZZ	5961-00-995-2310	1N752	04713	SEMICONDUCTOR DEVICE, DIODE	EA	1
3	2	PAHZZ	5961-00-931-0385	RT9343	07933	TRANSISTOR	EA	2
3	3	PAHZZ	5961-00-901-4862	2N3638	07263	TRANSISTOR	EA	1
3	4	PAHZZ	5961-00-574-3936	3641	07263	TRANSISTOR	EA	1
3	5	XDHZZ		DCC201F	75042	RESISTOR, FIXED, FILM	EA	1
3	6	PAHZZ	5905-00-726-1811	CEC102F	75042	RESISTOR, FIXED, FILM	EA	1
3	7	XDHZZ		CEC57R6F	75042	RESISTOR, FIXED, FILM	EA	1
3	8	PAHZZ	5905-00-110-0196	RCR20G102JS	81349	RESISTOR, FIXED, COMPOSITION	EA	1
3	9	PAHZZ	5905-00-948-8679	CEC4750F	75042	RESISTOR, FIXED, FILM	EA	1
3	10	PAHZZ	5935-00-759-3881	3304	91662	SOCKET, TRANSISTOR	EA	4
3	11	PAHZZ	5961-00-933-9440	47202	91662	RETAINER, TRANSISTOR SOCKET	EA	4



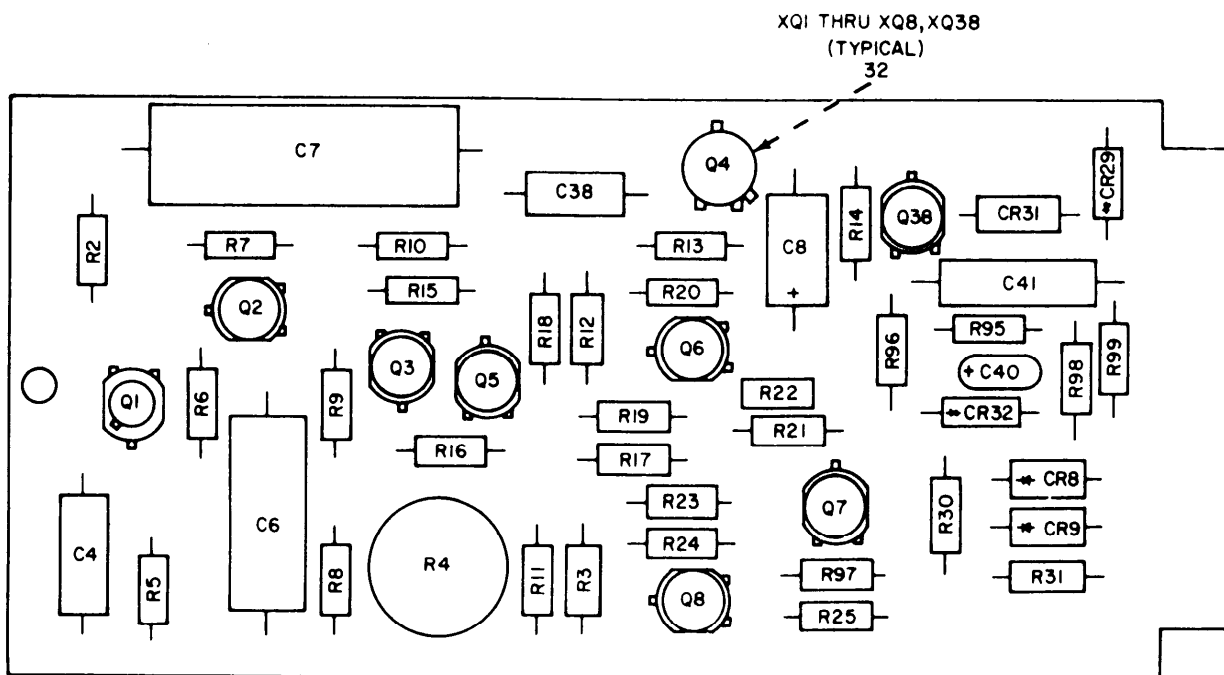
REF. DES.	ITEM NO.	REF. DES.	ITEM NO.	REF. DES.	ITEM NO.	REF. DES.	ITEM NO.
C19	1	Q16	12	Q36	12	R65	30
C23	2	Q17	12	R45	17	R66	31
C24	3	Q18	13	R46	18	R67	31
C25	4	Q19	13	R47	19	R68	22
C29	3	Q20	12	R48	20	R70	32
C30	5	Q21	14	R49	20	R71	33
C31	6	Q22	13	R50	21	R77	34
C35	3	Q23	13	R51	22	R78	35
C37	7	Q24	13	R55	23	R79	19
CR19	8	Q25	15	R56	24	R80	36
CR20	9	Q30	12	R57	25	R81	22
CR23	10	Q31	12	R58	22	R82	22
CR24A	11	Q32	16	R60	26	R83	37
CR24B	11	Q33	16	R61	27	R91	35
CR25A	11	Q34	12	R63	28	R92	38
CR25B	11	Q35	12	R64	29	R94	39

EL2JV006

Figure 4. Component Board A-3.

SECTION II (1) ILLUSTRATION (A) (B) FIG ITEM NO NO		(2) SMR CODE	(3) NATIONAL STOCK NUMBER	(4) PART NUMBER	(5) FSCM	TM11-6130-247-24P-1 (6) DESCRIPTION	(7) USABLE ON CODE U/M	(8) QTY INC IN UNIT
						GROUP 03 COMPONENT BOARD A-3		
4	1	PAHZZ	5910-00-351-0665	TE1156	56289	CAPACITOR, FIXED, ELECTROLYTIC	EA	1
4	2	PAHZZ	5910-00-827-1208	TE1162	56289	CAPACITOR, FIXED, ELECTROLYTIC	EA	1
4	3	XDHZZ		V146XR25	00656	CAPACITOR, FIXED, PLASTIC	EA	3
4	4	XDHZZ		V146XR27	00656	CAPACITOR, FIXED, PLASTIC	EA	1
4	5	XDHZZ		V146XR19	00656	CAPACITOR, FIXED, PLASTIC	EA	1
4	6	XDHZZ		V146XR16	00656	CAPACITOR, FIXED, PLASTIC	EA	1
4	7	PAHZZ	5910-00-919-5907	V146XR22	00656	CAPACITOR, FIXED, PLASTIC	EA	1
4	8	PAHZZ	5961-00-071-9254	1N750A	82366	SEMICONDUCTOR DEVICE, DIODE	EA	1
4	9	PAHZZ	5961-00-821-2309	1N751	04713	SEMICONDUCTOR DEVICE, DIODE	EA	1
4	10	PAHZZ	5961-00-891-4244	1N936	04713	SEMICONDUCTOR DEVICE, DIODE	EA	1
4	11	PAHZZ	5961-00-733-3185	RD9119	07933	SEMICONDUCTOR DEVICE, DIODE	EA	4
4	12	PAHZZ	5961-00-901-4862	2N3638	07263	TRANSISTOR	EA	8
4	13	PAHZZ	5961-00-574-3936	3641	07263	TRANSISTOR	EA	5
4	14	PAHZZ	5961-00-225-2199	RT9338	07933	TRANSISTOR	EA	1
4	15	PAHZZ	5962-00-162-8667	RA2206	07933	TRANSISTOR	EA	1
4	16	PAHZZ	5961-00-978-9667	2N3643	07263	TRANSISTOR	EA	2
4	17	PAHZZ	5905-00-104-8350	RCR20G221JS	81349	RESISTOR, FIXED, COMPOSITION	EA	1
4	18	PAHZZ	5905-00-104-8348	RCR20G332JS	81349	RESISTOR, FIXED, COMPOSITION	EA	1
4	19	PAHZZ	5905-00-111-4858	RCR20G471JS	81349	RESISTOR, FIXED, COMPOSITION	EA	2
4	20	PAHZZ	5905-00-141-0592	RCR20G122JS	81349	RESISTOR, FIXED, COMPOSITION	EA	2
4	21	XDHZZ		110-051M	11236	RESISTOR, VARIABLE	EA	1
4	22	PAHZZ	5905-00-141-1168	RCR20G222JS	81349	RESISTOR, FIXED, COMPOSITION	EA	5
4	23	XDHZZ		CEC2151F	75042	RESISTOR, FIXED, FILM	EA	1
4	24	PAHZZ	5905-00-104-8334	RCR20G331JS	81349	RESISTOR, FIXED, COMPOSITION	EA	1
4	25	XDHZZ		110-502M	11236	RESISTOR, VARIABLE	EA	1
4	26	XDHZZ		CEC1201F	75042	RESISTOR, FIXED, FILM	EA	1
4	27	PAHZZ	5905-00-935-8544	RCR20G181JS	81349	RESISTOR, FIXED, COMPOSITION	EA	1
4	28	PAHZZ	5905-00-141-0726	RCR32G181JS	81349	RESISTOR, FIXED, COMPOSITION	EA	1
4	29	PAHZZ	5905-00-141-0598	RCR20G561JS	81349	RESISTOR, FIXED, COMPOSITION	EA	1
4	30	PAHZZ	5905-00-111-4742	RCR20G391JS	81349	RESISTOR, FIXED, COMPOSITION	EA	1
4	31	PAHZZ	5905-00-110-0196	RCR20G102JS	81349	RESISTOR, FIXED, COMPOSITION	EA	2
4	32	PAHZZ	5905-00-141-1165	RCR20G682JS	81349	RESISTOR, FIXED, COMPOSITION	EA	1
4	33	PAHZZ	5905-00-141-0595	RCR20G472JS	81349	RESISTOR, FIXED, COMPOSITION	EA	1
4	34	PAHZZ	5905-00-114-5407	RCR20G271JS	81349	RESISTOR, FIXED, COMPOSITION	EA	1
4	35	PAHZZ	5905-00-111-8357	RCR20G681JS	81349	RESISTOR, FIXED, COMPOSITION	EA	2
4	36	PAHZZ	5905-00-114-5361	RCR20G121JS	81349	RESISTOR, FIXED, COMPOSITION	EA	1
4	37	PAHZZ	5905-00-141-1130	RCR20G272JS	81349	RESISTOR, FIXED, COMPOSITION	EA	1
4	38	PAHZZ	5905-00-106-9344	RCR20G101JS	81349	RESISTOR, FIXED, COMPOSITION	EA	1
4	39	PAHZZ	5905-00-116-8566	RCR20G680JS	81349	RESISTOR, FIXED, COMPOSITION	EA	1

SECTION II		TM11-6130-247-24P-1						
(1)	(2)	(3)	(4)	(5)	(6)	(7)	(8)	
ILLUSTRATION							QTY	
(A)	(B)	NATIONAL			DESCRIPTION		INC	
FIG	ITEM	STOCK	PART	FSCM		USABLE ON CODE	U/M	
NO	NO	NUMBER	NUMBER				UNIT	
4	40	PAHZZ	5935-00-892-8977	3305	91662	SOCKET, TRANSISTOR	EA	14



REF. DES.	ITEM NO.	REF. DES.	ITEM NO.	REF. DES.	ITEM NO.	REF. DES.	ITEM NO.	REF. DES.	ITEM NO.
C4	1	CR32	11	R3	18	RI4	26	R25	23
C6	2	Q1	12	R4	19	RI5	17	R30	26
C7	3	Q2	13	R5	20	RI6	17	R31	29
C8	4	Q3	14	R6	21	RI7	27	R95	25
C38	5	Q4	15	R7	17	RI8	17	R96	25
C40	6	Q5	16	R8	22	RI9	28	R97	30
C41	7	Q6	16	R9	23	R20	25	R98	31
CR8	8	Q7	14	RI0	24	R21	28	R99	26
CR9	8	Q8	16	RI1	17	R22	17		
CR29	9	Q38	14	RI2	25	R23	27		
CR31	10	R2	17	RI3	26	R24	17		

EL2JV007

Figure 5. Component Board A-4.

SECTION II (1) ILLUSTRATION (A) (B) FIG ITEM NO NO		(2) SMR CODE	(3) NATIONAL STOCK NUMBER	(4) PART NUMBER	(5) FSCM	TM11-6130-247-24P-1 (6) DESCRIPTION	(7) USABLE ON CODE U/M	(8) QTY INC IN UNIT
						GROUP 04 COMPONENT BOARD A-4		
5	1	PAHZZ	5910-00-928-3153	V146XR24	00656	CAPACITOR, FIXED, PLASTIC	EA	1
5	2	PAHZZ	5910-00-856-7642	V146XR30	00656	CAPACITOR, FIXED, PLASTIC	EA	1
5	3	XDHZZ		V146XR33	00656	CAPACITOR, FIXED, PLASTIC	EA	1
5	4	PAHZZ	5910-00-835-4667	TE1201-2	86289	CAPACITOR, FIXED, ELECTROLYTIC	EA	1
5	5	PAHZZ	5910-00-409-5349	V146XR20	00656	CAPACITOR, FIXED, PLASTIC	EA	1
5	6	XDHZZ		TSDH-6-107	06751	CAPACITOR, FIXED, ELECTROLYTIC	EA	1
5	7	PAHZZ	5910-00-937-2046	V146XR28	00656	CAPACITOR, FIXED, PLASTIC	EA	1
5	6	PAHZZ	5961-00-133-5482	CER68	21845	SEMICONDUCTOR DEVICE, DIODE	EA	2
5	9	XDHZZ		LMZX15	18641	SEMICONDUCTOR DEVICE, DIODE	EA	1
5	10	PAHZZ	5961-00-164-9720	C106Y21	09214	SEMICONDUCTOR DEVICE, DIODE	EA	1
5	11	PAHZZ	5961-00-068-2008	1N758A	04713	SEMICONDUCTOR DEVICE, DIODE	EA	1
5	12	PAHZZ	5961-00-902-1177	2N2646	03508	TRANSISTOR	EA	1
5	13	PAHZZ	5961-00-978-9667	2N3643	07263	TRANSISTOR	EA	1
5	14	PAHZZ	5961-00-901-4862	2N3638	07263	TRANSISTOR	EA	3
5	15	PAHZZ	5961-00-241-3594	2N697	03508	TRANSISTOR	EA	1
5	16	PAHZZ	5961-00-574-3936	3641	07263	TRANSISTOR	EA	3
5	17	PAHZZ	5905-00-110-0196	RCR20G102JS	81349	RESISTOR, FIXED, COMPOSITION	EA	8
5	18	PAHZZ	5905-00-106-1273	RCR20G153JS	81349	RESISTOR, FIXED, COMPOSITION	EA	1
5	19	XDHZZ		110-502M	11236	RESISTOR, VARIABLE	EA	1
5	20	PAHZZ	5905-00-141-0591	RCR20G103JS	81349	RESISTOR, FIXED, COMPOSITION	EA	1
5	21	PAHZZ	5905-00-141-1187	RCR20G203JS	81349	RESISTOR, FIXED, COMPOSITION	EA	1
5	22	PAHZZ	5905-00-111-4858	RCR20G471JS	81349	RESISTOR, FIXED, COMPOSITION	EA	1
5	23	PAHZZ	5905-00-116-8569	RCR20G821JS	81349	RESISTOR, FIXED, COMPOSITION	EA	2
5	24	PAHZZ	5905-00-141-1168	RCR20G222JS	81349	RESISTOR, FIXED, COMPOSITION	EA	1
5	25	PAHZZ	5905-00-141-0595	RCR20G472JS	81349	RESISTOR, FIXED, COMPOSITION	EA	4
5	26	PAHZZ	5905-00-111-4734	RCR20G470JS	81349	RESISTOR, FIXED, COMPOSITION	EA	4
5	27	PAHZZ	5905-00-104-8348	RCR20G332JS	81349	RESISTOR, FIXED, COMPOSITION	EA	2
5	28	PAHZZ	5905-00-111-8357	RCR20G681JS	81349	RESISTOR, FIXED, COMPOSITION	EA	2
5	29	PAHZZ	5905-00-141-0593	RCR20G182JS	81349	RESISTOR, FIXED, COMPOSITION	EA	1
5	30	PAHZZ	5905-00-141-1165	RCR20G682JS	81349	RESISTOR, FIXED, COMPOSITION	EA	1
5	31	PAHZZ	5905-00-106-9344	RCR20G101JS	81349	RESISTOR, FIXED, COMPOSITION	EA	1
5	32	PAHZZ	5935-00-892-8977	3305	91662	SOCKET, TRANSISTOR	EA	9

NOTE: LATEST NATIONAL STOCK NUMBER AND PART NUMBER ASSIGNMENTS ARE INCLUDED AT END OF INDEX.							
STOCK NUMBER	FIGURE NO	NATIONAL STOCK NUMBER ITEM NO	STOCK NUMBER	FIGURE NO	ITEM NO		
6210-00-023-7029	1	116	5970-00-284-8009	1	41		
5920-00-043-2641	1	94	5340-00-291-5294	1	84		
5940-00-050-7021	1	57	5910-00-351-0665	4	1		
5961-00-068-2008	5	11	5940-00-356-2493	1	112		
			5910-00-409-5349	5	5		
5310-00-081-4219	1	17	5961-00-574-3936	3	4		
6150-00-089-8814	1	92	5961-00-574-3936	4	13		
5905-00-104-8334	4	24	5961-00-574-3936	5	16		
5905-00-104-8348	4	18	5930-00-655-1582	1	109		
5905-00-104-8348	5	27	5940-00-681-8184	1	62		
5905-00-104-8350	4	17	5910-00-682-2543	1	13		
5905-00-106-1273	5	18	6240-00-683-0560	1	115		
5905-00-106-9344	4	38	5310-00-687-7337	1	8		
5905-00-106-9344	5	31					
5905-00-110-0196	3	8	5905-00-726-1811	3	6		
5905-00-110-0196	4	31	5961-00-733-3185	4	11		
5905-00-110-0196	5	17	5935-00-755-3771	1	66		
5905-00-110-0991	1	79	5935-00-759-3881	3	10		
5905-00-111-4734	5	26	5310-00-782-1349	1	38		
5905-00-111-4742	4	30	5905-00-812-9625	1	1		
5905-00-111-4858	4	19	5970-00-818-3486	1	75		
5905-00-111-4858	5	22	5961-00-821-2309	4	9		
6210-00-111-6971	1	108	5910-00-827-1208	4	2		
5905-00-114-5361	4	36	5910-00-828-0725	1	31		
5905-00-114-5407	4	34	5910-00-835-4667	5	4		
5905-00-116-8566	4	39	5310-00-836-3520	1	45		
5905-00-116-8569	5	23	5940-00-847-3138	1	6		
5961-00-133-5482	1	111	5910-00-856-7642	5	2		
5961-00-133-5482	2	4	5310-00-880-5976	1	50		
5961-00-133-5482	5	8	5935-00-892-8977	4	40		
5905-00-141-0591	5	20	5935-00-892-8977	5	32		
5905-00-141-0592	4	20	5961-00-901-4862	4	12		
5905-00-141-0593	5	29	5961-00-901-4862	5	14		
5905-00-141-0595	4	33	5961-00-902-1177	5	12		
5905-00-141-0595	5	25	5910-00-919-5907	1	71		
5905-00-141-0598	4	29	5910-00-919-5907	4	7		
5905-00-141-0726	4	28	5961-00-924-4265	1	59		
5905-00-141-1130	4	37	5310-00-928-2690	1	70		
5905-00-141-1165	4	32	5910-00-928-3153	5	1		
5905-00-141-1165	5	30	5905-00-929-7170	1	82		
5905-00-141-1168	4	22	5961-00-931-0385	3	2		
5905-00-141-1168	5	24	5310-00-933-8118	1	72		
5905-00-141-1187	5	21	5310-00-933-8119	1	27		
5940-00-155-7685	1	106	5310-00-933-8120	1	61		
5940-00-156-7344	1	44	5961-00-933-9440	3	11		
5910-00-161-4396	1	14	5961-00-933-9441	1	87		
5910-00-161-4420	2	1	5310-00-934-9748	1	74		
5910-00-162-1836	1	34	5310-00-934-9761	1	64		
5905-00-162-8671	1	88	5310-00-934-9765	1	54		
5961-00-164-9720	5	10	5905-00-935-8544	4	27		
5340-00-166-8585	1	24	5910-00-937-2043	1	52		
5940-00-171-0156	1	46	5910-00-937-2046	1	60		
5940-00-193-0056	1	53	5910-00-937-2046	5	7		
5940-00-204-8023	1	12	5310-00-938-2013	1	69		
5340-00-205-6136	1	89	5905-00-948-8679	3	9		
5961-00-225-2199	1	80	5970-00-952-8286	1	73		
5961-00-225-2199	4	14	5305-00-969-6495	1	95		
5961-00-241-3594	5	15	5999-00-975-9657	1	29		
5975-00-246-4906	1	91	5910-00-976-1129	1	90		
5310-00-264-1390	1	55	5961-00-978-9667	4	16		
5940-00-269-2219	1	114	5961-00-978-9667	5	13		
5905-00-279-1979	1	76	5940-00-983-6073	1	99		
5910-00-280-7416	2	3	5961-00-995-2310	3	1		
5920-00-284-6787	1	93	5910-00-025-0748	1	124		

PART NUMBER	FSCM	FIG NO	ITEM NO	PART NUMBER	FSCM	FIG NO	ITEM NO
AN961-10	88044	1	55	CPC742-5	71616	1	84
BH209	76348	1	24	C106Y21	09214	5	10
CEC102F	75042	3	6	C6310-632-27	78553	1	30
CEC1201F	75042	4	26	DCC201F	75042	3	5
CEC2151F	75042	4	23	DELTA103	05820	1	125
CEC4750F	75042	3	9	DF30RC	78636	1	114
CEC57R6F	75042	3	7	DF30RC	78636	1	112
CER68	21845	1	111	DS70-1-3890-1CB4	49056	1	118
CER68	21845	2	4	D150	91500	1	73
CER68	21845	5	8	FAH252-50	09023	1	34
CPC742-10	71616	1	89	FAH252-75	09023	1	32

PART NUMBER	FSCM	FIG NO	ITEM NO	PART NUMBER	FSCM	FIG NO	ITEM NO
FAH502-50	09023	1	14	V146XR30	00656	5	2
HB15-50	81312	1	51	V146XR32	00656	1	52
HP35WLP5	03877	1	58	V146XR33	00656	5	3
LMZX15	18641	5	9	V146XR34	00656	1	90
MS15795-804	96906	1	38	V146XR48	00656	1	124
MS15795-806	96906	1	50	05-3301	91662	1	66
MS24693C25	96906	1	95	1N746	04713	1	104
MS27183-12	96906	1	17	1N750A	82366	4	8
MS35338-134	96906	1	70	1N751	04713	4	9
MS35338-135	96906	1	72	1N752	04713	3	1
MS35338-137	96906	1	27	1N758A	04713	5	11
MS35338-138	96906	1	61	1N936	04713	4	10
MS35649-224	96906	1	69	10F1000	63743	1	39
MS35649-244	96906	1	74	10F15	63743	1	1
MS35649-264	96906	1	64	10348	71785	1	7
MS35650-304	96906	1	54	1050A1	08806	1	108
NC400B	55938	1	19	110-051M	11236	4	21
RA2206	07933	4	15	110-502M	11236	4	25
RCR20G010JS	81349	1	102	110-502M	11236	5	19
RCR20G101JS	81349	4	38	115058-05	00853	1	31
RCR20G101JS	81349	5	31	12-140Y	71785	1	99
RCR20G102JS	81349	3	8	121-2X681J	63743	2	5
RCR20G102JS	81349	4	31	126-2778	55938	1	22
RCR20G102JS	81349	5	17	126-2854	55938	1	28
RCR20G103JS	81349	5	20	127-1720	55938	1	21
RCR20G121JS	81349	4	36	1510A	71785	1	53
RCR20G122JS	81349	4	20	1513	71785	1	46
RCR20G153JS	81349	5	18	162-8430-972	81349	1	116
RCR20G181JS	81349	4	27	18-149-4	55938	1	67
RCR20G182JS	81349	5	29	18-024	55938	1	87
RCR20G203JS	81349	5	21	18-3SJPLUG3P	73617	1	92
RCR20G221JS	81349	4	17	190-3501	55938	1	18
RCR20G222JS	81349	4	22	190-3502	55938	1	11
RCR20G222JS	81349	5	24	190-3578-1	55938	1	20
RCR20G271JS	81349	4	34	190-3581-1	55938	1	48
RCR20G272JS	81349	4	37	190-3582	55938	1	83
RCR20G331JS	81349	4	24	2-137	55938	1	36
RCR20G332JS	81349	4	18	2N2646	03508	5	12
RCR20G332JS	81349	5	7	2N3638	07263	3	3
RCR20G391JS	81349	4	30	2N3638	07263	4	12
RCR20G470JS	81349	5	26	2N3638	07263	5	14
RCR20G471JS	81349	4	19	2N3643	07263	4	16
RCR20G471JS	81349	5	22	2N3643	07263	5	13
RCR20G472JS	81349	4	33	2N669	13327	1	77
RCR20G472JS	81349	5	25	2N697	03508	5	15
RCR20G561JS	81349	4	29	210-6300	13327	1	75
RCR20G680JS	81349	4	39	2101-10-00	78189	1	106
RCR20G681JS	81349	4	35	2104-04-00	78139	1	6
RCR20G681JS	81349	5	28	2104-06-00	78189	1	44
RCR20G682JS	81349	4	32	2118-10-01	78189	1	57
RCR20G682JS	81349	5	30	25F125	63743	1	5
RCR20G821JS	81349	5	23	29-404	55938	1	119
RCR32G151JS	81349	1	79	29-407	55938	1	82
RCR32G181JS	81349	4	28	29-469	55938	1	117
RC42GF101J	81349	1	76	312005	75915	1	93
RD9119	07933	4	11	3304	91662	3	10
RT9338	07933	1	80	3305	91662	4	40
RT9338	07933	4	14	3305	91662	5	32
RT9343	07933	3	2	34D188G015FP4	56289	2	2
SR6P4	28520	1	91	342012	75915	1	94
TE1156	56289	4	1	345	08806	1	115
TE1162	56289	4	2	3641	07263	3	4
TE1201-2	56289	5	4	3641	07263	4	13
TE1304-2	56289	1	100	3641	07263	5	16
TSDH-6-107	06751	5	6	368C	05277	1	59
TVA1208	56289	2	3	39D198G006FL4	56289	2	1
VR3	90201	1	13	47202	91662	3	11
V146XR16	00656	1	81	5F40	63743	1	35
V146XR16	00656	4	6	510-061810-01	78189	1	8
V146XR19	00656	4	5				
V146XR20	00656	5	5	510-081810-01	78189	1	98
V146XR22	00656	1	71	511-041800-00	78189	1	45
V146XR22	00656	4	7	520	96906	1	62
V146XR24	00656	5	1	6-1056	55938	1	2
V146XR25	00656	1	101	6-1105	55938	1	42
V146XR25	00656	4	3	6-2000-43	55938	1	121
V146XR27	00656	1	63	6-2001-13	55938	1	49
V146XR27	00656	4	4	6-2001-14	55938	1	65
V146XR28	00656	1	60	6-2001-15	55938	1	33
V146XR28	00656	5	7	6-2001-19	55938	1	37

PART NUMBER	FSCM	FIG NO	ITEM NO	PART NUMBER	FSCM	FIG NO	ITEM NO
6-2001-56	55938	1	68	73-1536	55938	1	96
6-2001-69	55938	1	56	73-1537	55938	1	97
6-2001-82	55938	1	16	73-1538	55938	1	120
6-2004-11	55938	1	78	7565K6	27191	1	109
6-2004-19	55938	1	26	766	81312	1	12
6-2004-20	55938	1	85	90-3421	55938	1	113
6-2004-21	55938	1	9	90-3501	55938	1	110
6-2005-17	55938	1	23	903	63743	1	3
6-4014	55938	1	15	91-1800	55938	1	29
7XR15	63743	1	43	919-412-170	12136	1	105
7XR24	63743	1	88	924	63743	1	4
73-1061	55938	1	122	929	63743	1	41
73-1062	55938	1	10	94-433-3	55938	1	107
73-1063	55938	1	103	94-549-4	55938	1	123
73-1212	55938	1	25				

LATEST NATIONAL STOCK NUMBER ASSIGNMENTS

STOCK NUMBER	FIG NO	ITEM NO	STOCK NUMBER	FIG NO	ITEM NO
5961-00-071-9254	4	8	5905-00-163-3858	1	117
5950-00-086-9730	1	21	6130-00-169-6048	1	48
5905-00-111-8357	4	35	6130-00-171-0910	1	86
5905-00-111-8357	5	28	5305-00-194-8006	1	56
5950-00-161-4418	1	22	5310-00-680-6464	1	98
5962-00-162-8667	4	15	5970-00-808-4111	1	4
5961-00-162-8670	1	47	5310-00-809-9789	1	58
5961-00-163-3854	1	67	5961-00-833-6321	1	77
5905-00-163-3855	1	18	5961-00-891-4244	4	10
5905-00-163-3856	1	11	5961-00-901-4862	3	3
5905-00-163-3857	1	119	5910-00-925-3786	1	32

LATEST PART NUMBER ASSIGNMENTS

PART NUMBER	FSCM	FIG. NO.	ITEM NO.
18-137-1	55938	1	47
190-3583-1	55938	1	86
6-2004-14	55938	1	40

ADDITIONAL LATEST NATIONAL STOCK NUMBER ASSIGNMENTS

STOCK NUMBER	FIGURE NO.	ITEM NO.
6625-00-043-2184	1	123
5305-00-235-9569	1	121
5305-00-235-9600	1	40
5305-00-235-9650	1	85

RECOMMENDED CHANGES TO EQUIPMENT TECHNICAL MANUALS



SOMETHING WRONG WITH THIS MANUAL?

THEN... JOT DOWN THE DOPE ABOUT IT ON THIS FORM, TEAR IT OUT, FOLD IT AND DROP IT IN THE MAIL!

FROM: (YOUR UNIT'S COMPLETE ADDRESS)

Commander
Stateside Army Depot
ATTN: AMSTA-US
Stateside, N.J. 07703

DATE 10 July 1975

PUBLICATION NUMBER

TM 11-5840-340-12

DATE

23 Jan 74

TITLE

Radar Set AN/PSC-76

BE EXACT... PIN-POINT WHERE IT IS

IN THIS SPACE TELL WHAT IS WRONG AND WHAT SHOULD BE DONE ABOUT IT:

PAGE NO.	PARA-GRAPH	FIGURE NO.	TABLE NO.
----------	------------	------------	-----------

2-25	2-28		
3-10	3-3		3-1
5-6	5-8		

FO3

Recommend that the installation antenna alignment procedure be changed throughout to specify a 2° IFF antenna lag rather than 1°.

REASON: Experience has shown that with only a 1° lag, the antenna servo system is too sensitive to wind gusting in excess of 20 knots, and has a tendency to rapidly accelerate and decelerate as it hunts, causing strain to the drive train. Hunting is minimized by adjusting the lag to 2° without degradation of operation.

Item 5, Function column. Change "2 db" to "3db."

REASON: The adjustment procedure for the TRANS POWER FAULT indicator calls for a 3 db (500 watts) adjustment to light the TRANS POWER FAULT indicator.

Add new step f.1 to read, "Replace cover plate removed in step e.1, above."

REASON: To replace the cover plate.

Zone C 3. On J1-2, change "+24 VDC to "+5 VDC."

REASON: This is the output line of the 5 VDC power supply. + 24 VDC is the input voltage.

TYPED NAME, GRADE OR TITLE, AND TELEPHONE NUMBER

SSgt I. M. DeSpirito 999-1776

SIGN HERE:

SSgt I. M. DeSpirito

DA FORM 2028-2 (TEST)

1 AUG 74

P.S.--IF YOUR OUTFIT WANTS TO KNOW ABOUT YOUR MANUAL "FIND" MAKE A CARBON COPY OF THIS AND GIVE IT TO YOUR HEADQUARTERS.

HISA 1686-75

TEAR ALONG DOTTED LINE

RECOMMENDED CHANGES TO EQUIPMENT TECHNICAL MANUALS



SOMETHING WRONG WITH THIS MANUAL?

THEN... JOT DOWN THE DOPE ABOUT IT ON THIS FORM, TEAR IT OUT, FOLD IT AND DROP IT IN THE MAIL!

FROM: (YOUR UNIT'S COMPLETE ADDRESS)

DATE

PUBLICATION NUMBER

DATE

TITLE

BE EXACT... PIN-POINT WHERE IT IS

IN THIS SPACE TELL WHAT IS WRONG AND WHAT SHOULD BE DONE ABOUT IT:

PAGE NO.

PARA-GRAPH

FIGURE NO.

TABLE NO.

TEAR ALONG DOTTED LINE

TYPED NAME, GRADE OR TITLE, AND TELEPHONE NUMBER

SIGN HERE:

DA FORM 2028-2 (TEST)
1 AUG 74

P.S.--IF YOUR OUTFIT WANTS TO KNOW ABOUT YOUR MANUAL "FIND" MAKE A CARBON COPY OF THIS AND GIVE IT TO YOUR HEADQUARTERS.

FILL IN YOUR
UNIT'S ADDRESS

FOLD BACK

DEPARTMENT OF THE ARMY

OFFICIAL BUSINESS

Commander
US Army Electronics Command
ATTN: DRSEL-MA-Q
Fort Monmouth, New Jersey 07703

FOLD BACK

TEAR ALONG DOTTED LINE

FILL IN YOUR
UNIT'S ADDRESS

FOLD BACK

DEPARTMENT OF THE ARMY

OFFICIAL BUSINESS

Commander
US Army Electronics Command
ATTN: DRSEL-MA-Q
Fort Monmouth, New Jersey 07703

FOLD BACK

TEAR ALONG DOTTED LINE

FILL IN YOUR
UNIT'S ADDRESS

FOLD BACK

DEPARTMENT OF THE ARMY

OFFICIAL BUSINESS

Commander
US Army Electronics Command
ATTN: DRSEL-MA-Q
Fort Monmouth, New Jersey 07703

FOLD BACK

TEAR ALONG DOTTED LINE

By Order of the Secretary of the Army:

BERNARD W. ROGERS
General, United States Army
Chief of Staff

Official:

PAUL T. SMITH
Major General, United States Army
The Adjutant General

DISTRIBUTION:

To be distributed in accordance with DA Form 12-32, Direct and General Support Maintenance requirements for AN/FPA-15 and AN/FPA-16 Systems.

